

B R O C H U R E



# Wire Mesh Fence



Anping Web Wire Mesh Co.,Ltd.

# Metallic Mesh For Fence

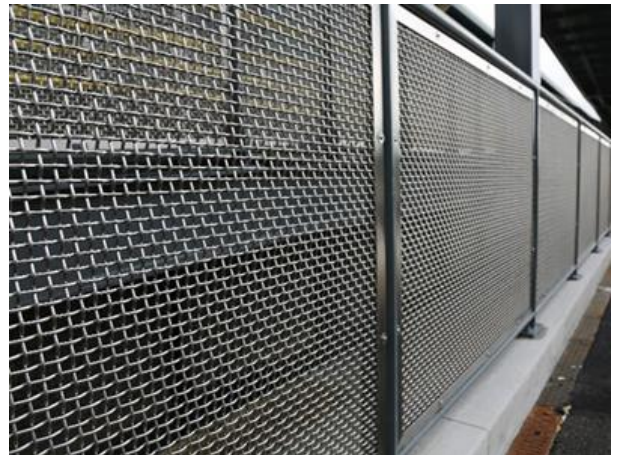


## Introduction

The metal wires are woven into strong and stabilized structure to ensure fixed opening through the process of crimping and weaving. Additional rigidity and strength can be obtained by adding Crimps between the intersections. Based on these basic characteristics, the crimped mesh is widely used for fence, gates or enclosure

## Products

- Stainless steel wire mesh
- Crimped wire mesh
- Cable & rod combination mesh
- Wire & rod combination mesh
- Flat wire decorative mesh
- X-Type cable mesh



Idea for	Screen Size	Features & Benefits
<ul style="list-style-type: none"><li>• Building</li><li>• Park</li></ul>	<ul style="list-style-type: none"><li>• 10mm opening</li><li>• 20mm opening</li><li>• 50mm opening</li></ul>	<ul style="list-style-type: none"><li>• Abrasion and wear proof</li><li>• Rugged and tough design</li><li>• Long service life</li><li>• High resistance against corrosion</li><li>• Great stability</li></ul>

# Technical Parameters

## When ordering, please specify:

### 1. Weave Type

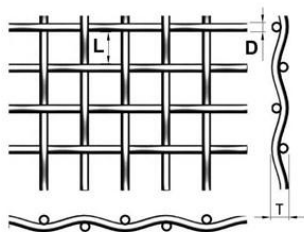
Plain crimped, single crimped, locked crimped, flat top crimped, slot hole crimped, h type cable and rod mesh, h type pre-crimped wire and rod mesh, X-Type cable mesh

### 2. Wire Diameter (D)

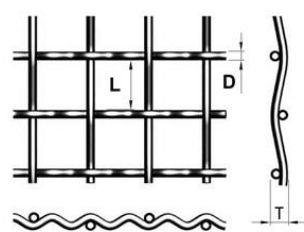
### 3. Hole Size (L)

### 4. Panel Width (PW)

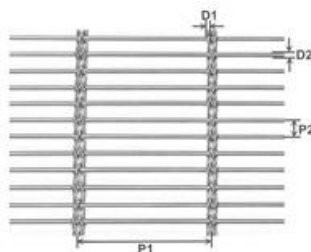
### 5. Panel Length (PL)



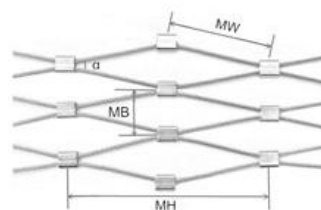
Plain Crimped



Single Crimped



Cable & Rod Mesh



X-type Cable Mesh

## Crimped Wire Screen

Opening L		Wire D		Open Area	Weight
mm	inch	mm	inch	%	Kgs/m <sup>2</sup>
10.00	0.394	1.80	0.071	71.82	3.39
10.00	0.394	1.60	0.063	74.32	2.72
20.00	0.787	2.00	0.079	82.64	2.24
20.00	0.787	1.80	0.071	84.17	1.83
25.40	1.000	2.60	0.102	82.29	2.98
25.40	1.000	2.30	0.091	84.08	2.35
50.80	2.000	3.60	0.142	87.20	2.94
50.80	2.000	3.20	0.126	88.50	2.34

### Headquarters

Web Wire Mesh Co.,Ltd.  
No.12 Weier Rd.  
EZD Industrial Park  
Hebei, China  
Tel: +86 0318 7568801  
Fax: +86 0318 7568802  
Website:www.webwovenmesh.com

### Branch

Web Wire Mesh Co.,Ltd.-SJZ  
NO 2701 CYC  
Shijiazhuang City  
Hebei, China  
Tel: +86 0311 89255081  
E-mail: zhao@webwirecloth.com



Anping Web Wire Mesh Co.,Ltd.